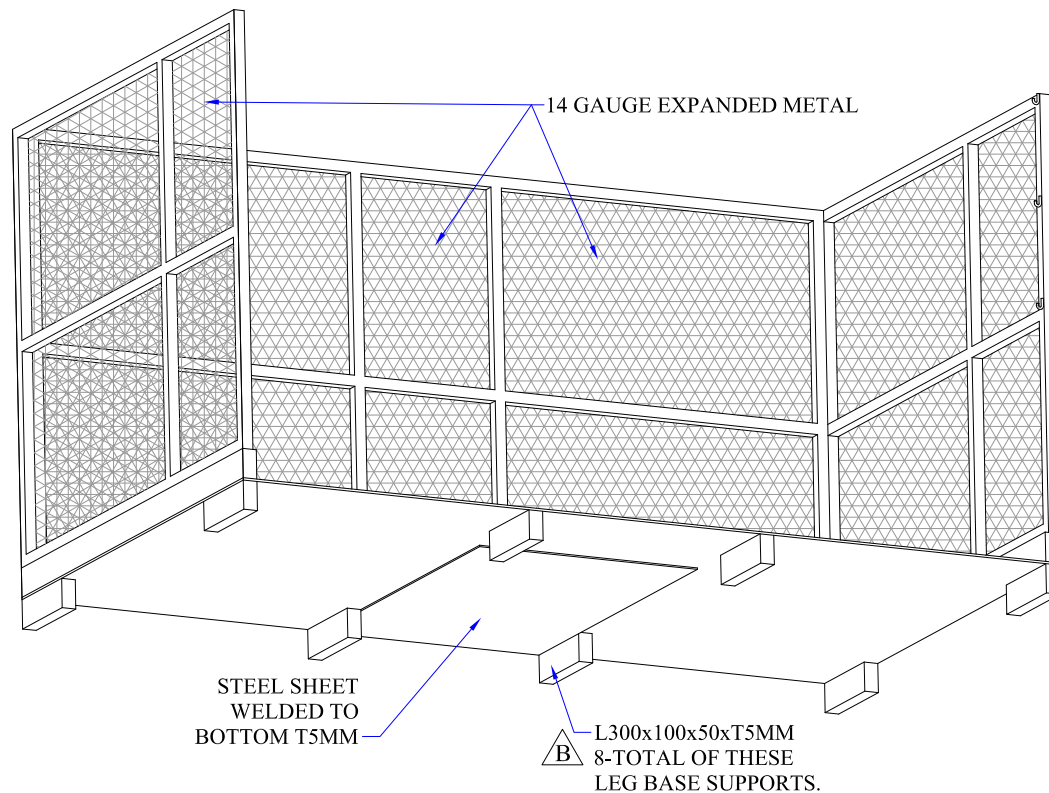
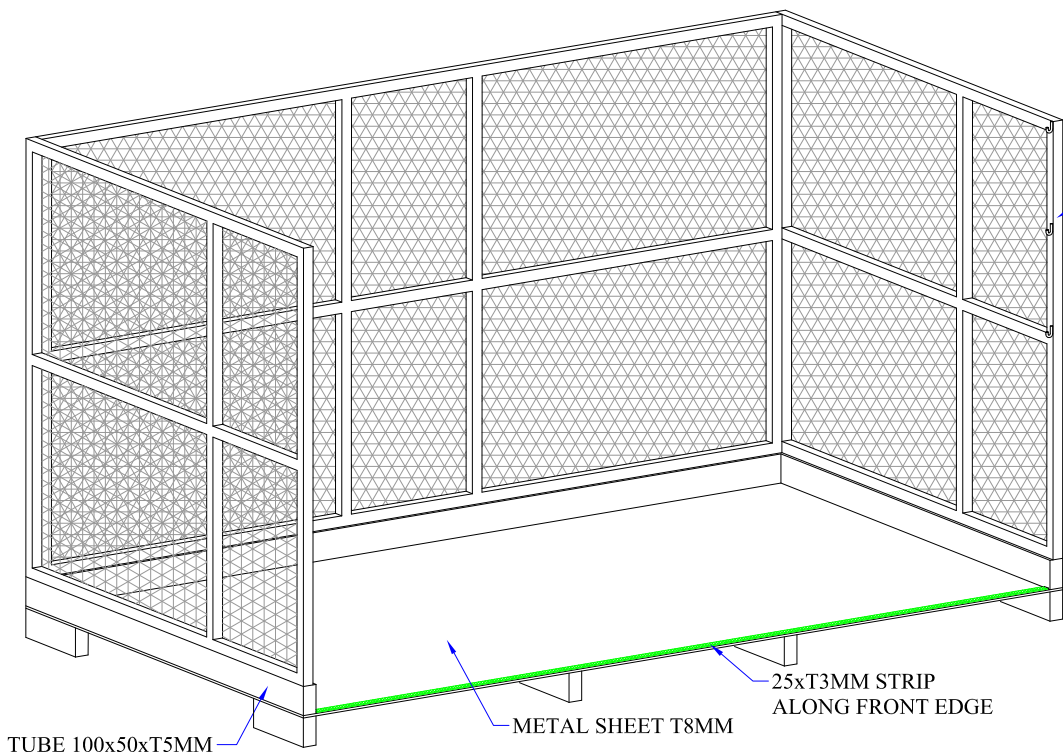
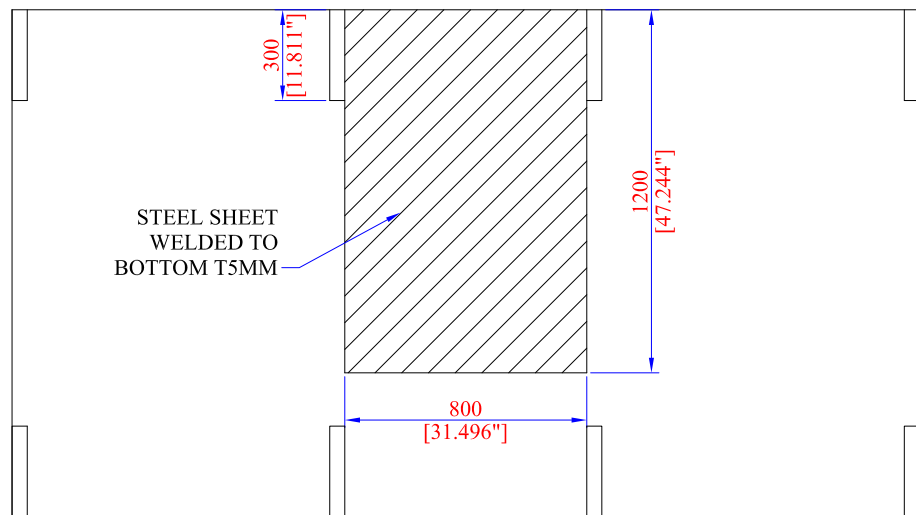


CONFIDENTIAL INFORMATION: THIS DOCUMENT, AND THE DATA AND INFORMATION CONTAINED THEREIN, IS CONFIDENTIAL AND PROPRIETARY TO CHARLES W. WEAVER MANUFACTURING COMPANY. NEITHER THIS DOCUMENT NOR ANY INFORMATION OR DATA THEREIN MAY BE REPRODUCED, USED, RELEASED OR DISCLOSED, IN WHOLE OR IN PART, WITHOUT EXPRESS WRITTEN CONSENT OF CHARLES W. WEAVER MANUFACTURING COMPANY.

WEAVER MANUFACTURING COMPANY		△D		
NAME: LUGGAGE CART TRANSPORT CAGE		△C		
ITEM NO: VVCTO18061401B		△B	ADD 3-SETS OF SOLID RUBBER WHEEL CHOCKS; ADD 3-HOOKS; 8-LEG BASE SUPPORTS.	
SCALE:		REV.	DESCRIPTION	
UNIT: MM	SHEET 1 OF 2	DRAWN	JADENCE	2018-07-03



- NOTE:
1. MATERIAL: STEEL GALVANIZED AND PAINTED SAFETY YELLOW.
 2. WEIGHT: 661KGS.
 3. ITEM MUST BE LABELED WITH A DATE CODE.



BOTTOM VIEW

WEAVER MANUFACTURING COMPANY		△D	
NAME: LUGGAGE CART TRANSPORT CAGE		△C	
ITEM NO: VVCTO18061401B		△B	ADD 3-SETS OF SOLID RUBBER WHEEL CHOCKS; ADD 3-HOOKS; 8-LEG BASE SUPPORTS.
SCALE:		REV.	DESCRIPTION
UNIT: MM	SHEET 2 OF 2	DRAWN	JADENCE
			2018-07-03